

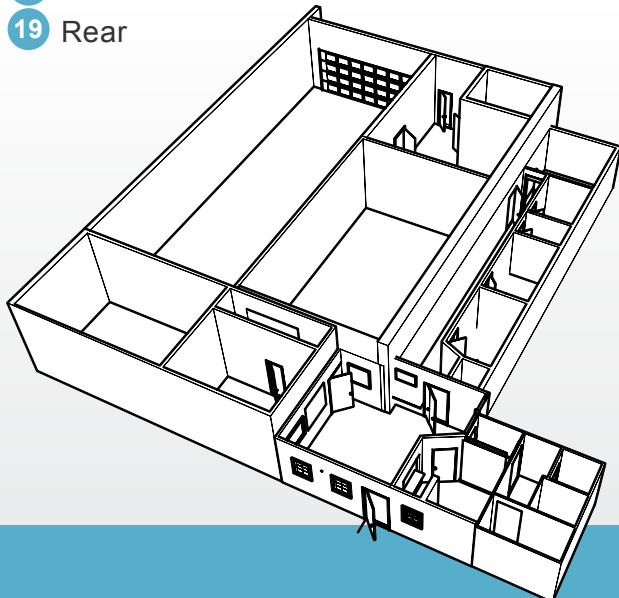
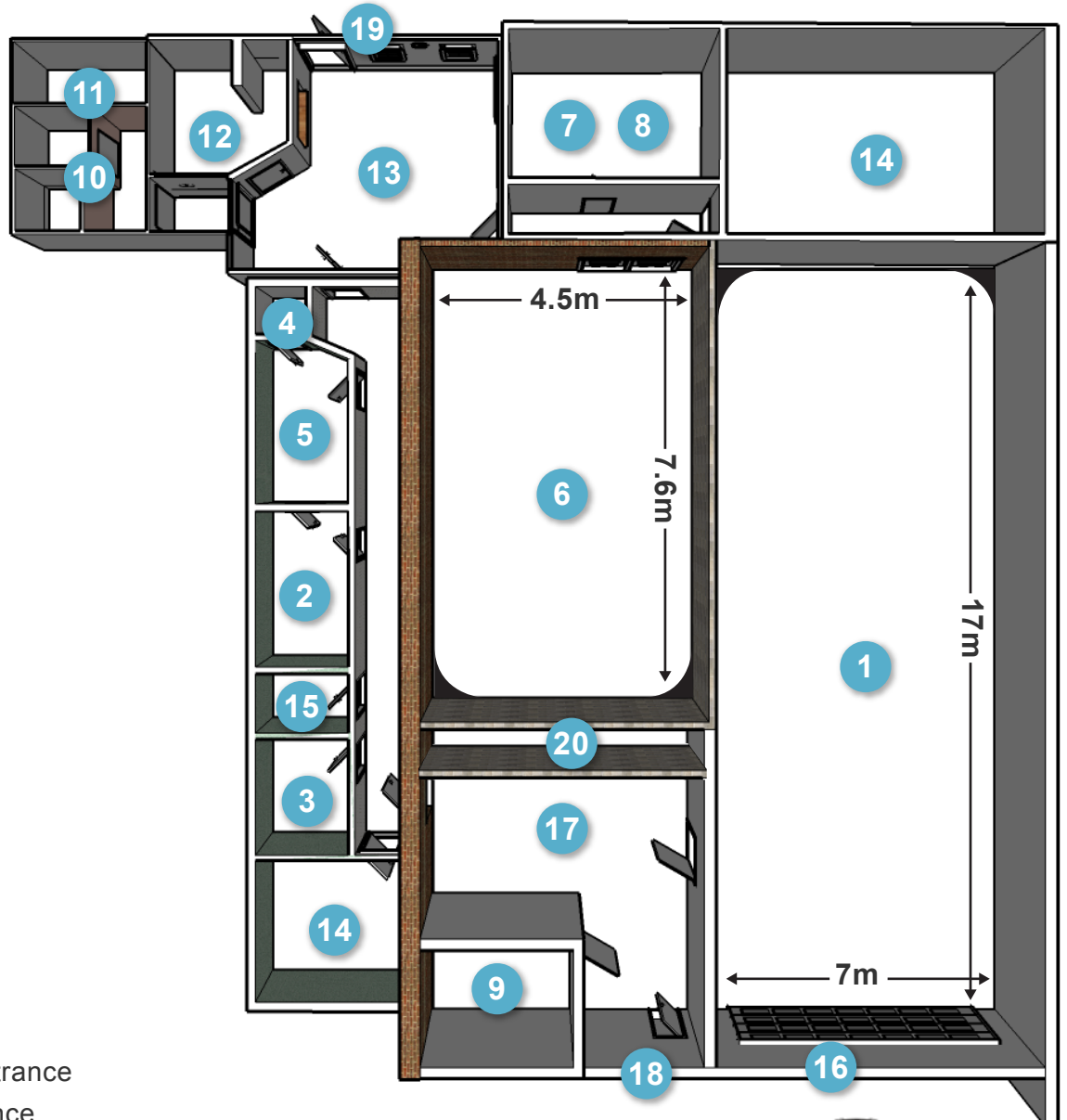
Camberwell Studios Floor Plan

- 1 Studio 1**
- 2 Green Room**
- 3 Production Office**
- 4 Changing Room**
- 5 Wardrobe**

- 6 Studio 2**
- 7 Changing Room**
- 8 Wardrobe**

- + Other Areas**
- 9 Storage**
- 10 Restrooms**
- 11 Restrooms**
- 12 Kitchen**
- 13 Cafe**
- 14 Offices**
- 15 Storage**
- 16 Drive In Access**
- 17 Lobby**
- 20 Storage**

- + Fire Exits**
- 16 Front - Drive In Entrance**
- 18 Front - Main Entrance**
- 19 Rear**



Camberwell Studios
Block A
Chartwell Business Park
61-65 Paulet Road
LONDON
SE5 9HW