

Studio 1 Rate Card - Full Day 8am - 5pm (9hrs)

STUDIO 1 - FLEXIBLE SPACE (1300 sq ft)

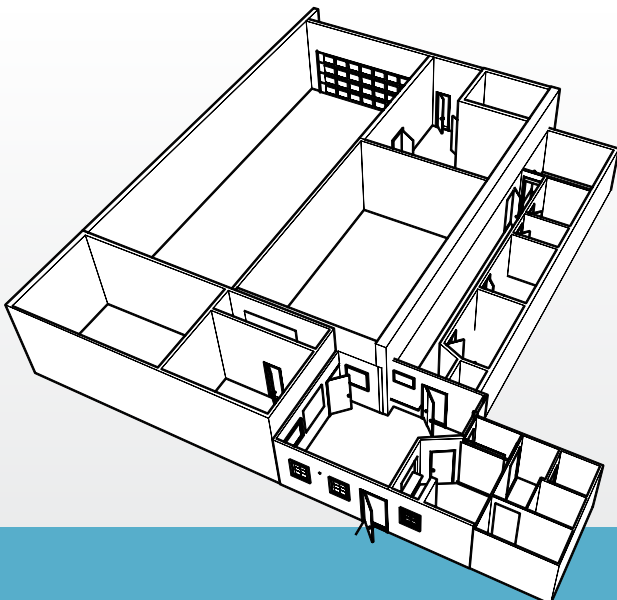
| Usage Times | Regular Price | Introductory Price* |
|--------------------------|---------------|---------------------|
| + Weekdays (full day) | £700 | £525 |
| + Weekends (full day) | £800 | £600 |
| + Overtime (per hour) | £78 | £60 |
| + Evenings (6pm to 10pm) | £311 | £300 |

Introductory Price* Subject to Terms & Conditions - See Website For Details
All Prices Are Subject To Additional VAT Charges.

Facilities Available

STUDIO 1 - FLEXIBLE SPACE (1300 sq ft)

| | |
|--|-----------------------------|
| + 1300 sq ft | + Lighting Grid at 4 metres |
| + White Cyc | + Catering Available |
| + 300A Power (64, 32, 16, 13A Outlets) | + Natural Light / Blackout |
| + Drive In Studio | + Production Office |
| + Parking Space | + Green Room |
| + Wardrobe / Make Up Room | + FREE Wi-Fi |
| + Shared Kitchen Area | + Shower Room |



Camberwell Studios
Block A
Chartwell Business Park
61-65 Paulet Road
LONDON
SE5 9HW